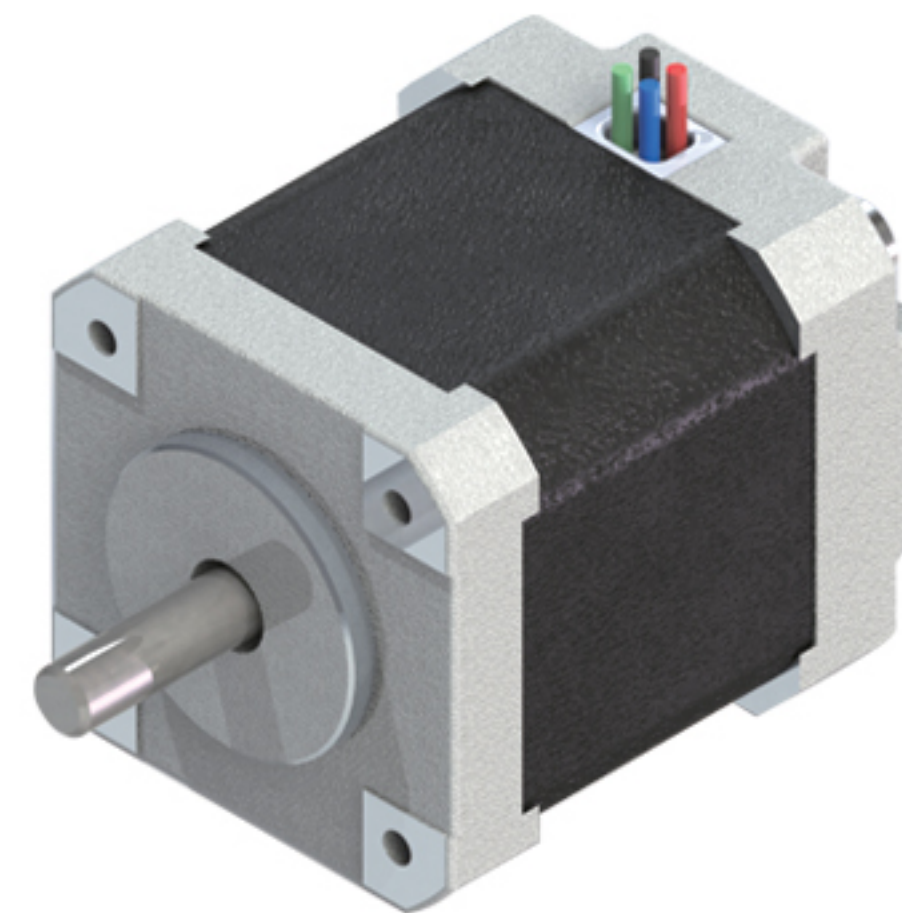


# 35H2F系列步进电机

## 35H2F Series stepping motor

步距角 Step Angle	1.8°
绝缘电阻 Insulation Resistance	500V DC 100MΩ Min
绝缘强度 Dielectric Strength	500V AC 50Hz 2mA 1Minute
环境温度 Ambient Temperature	-20~+40°C
温升 Temperature Rise	80K Max
绝缘等级 Insulation Class	B



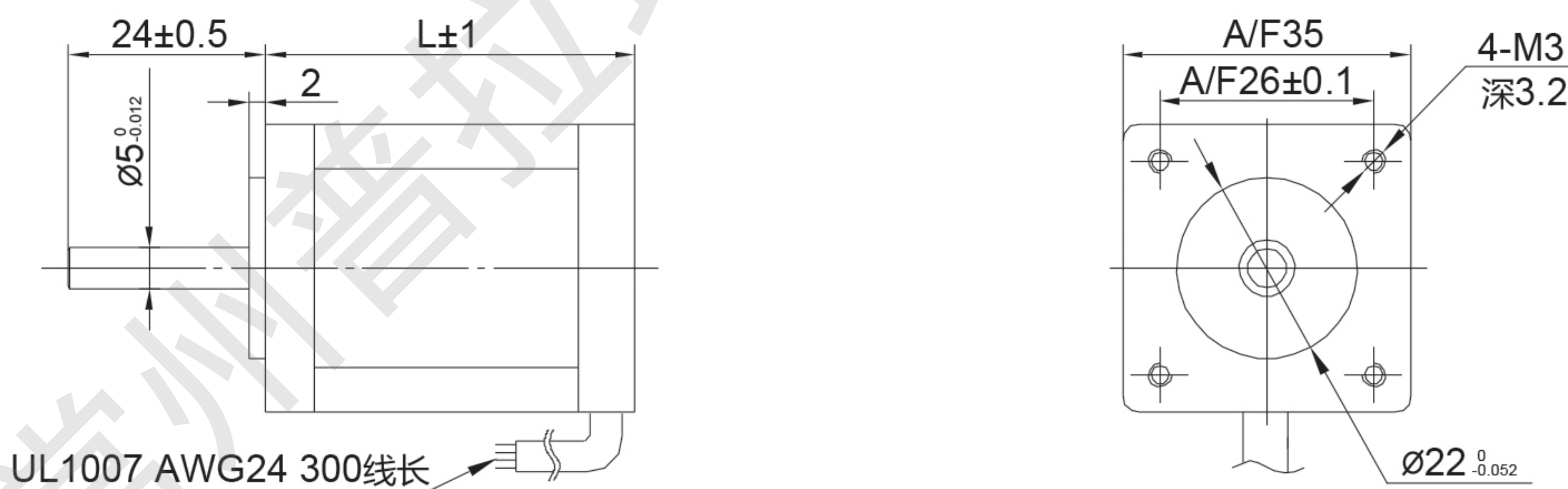
产品性能参数(Electrical specification):

35H2F 双极性

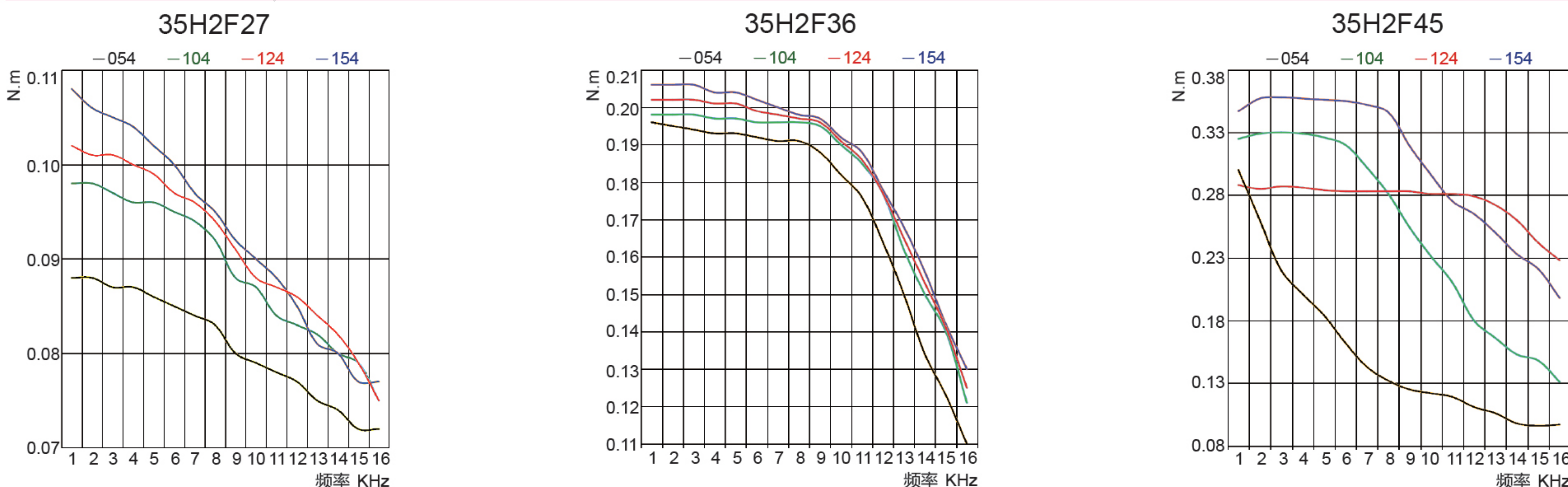
型号	机身长度 mm	额定电压 V	额定电流 Amps	绕组电参数 @20°C Typ.		静力矩		转子惯量		电机质量	
				Ohms	mH	N.m	oz-in	g.cm <sup>2</sup>	oz-in <sup>2</sup>	Kg	Lbs
35H2F27-054	27	4.25	0.5	8.5	8.0	0.14	20	12	0.07	0.15	0.33
35H2F27-104		4.5	1.0	4.5	4.0	0.14	20	12	0.07	0.15	0.33
35H2F27-124		3.48	1.2	2.9	2.5	0.14	20	12	0.07	0.15	0.33
35H2F27-154		3.0	1.5	2.0	1.8	0.14	20	12	0.07	0.15	0.33
35H2F36-054	36	5.0	0.5	10	24	0.22	32	20	0.11	0.21	0.46
35H2F36-104		3.0	1.0	3.0	5.3	0.22	32	20	0.11	0.21	0.46
35H2F36-124		3.36	1.2	2.8	3.0	0.22	32	20	0.11	0.21	0.46
35H2F36-154		2.7	1.5	1.8	2.2	0.22	32	20	0.11	0.21	0.46
35H2F45-054	44	7.5	0.5	15	28	0.37	53	30	0.17	0.24	0.53
35H2F45-104		4.3	1.0	4.3	7.0	0.37	53	30	0.17	0.24	0.53
35H2F45-154		4.35	1.5	2.9	4.5	0.37	53	30	0.17	0.24	0.53
35H2F45-204		3.2	2.0	1.6	2.6	0.37	53	30	0.17	0.24	0.53

以上产品可根据客户要求定制。  
Above Products can be customized according to customer requirement.

外形尺寸 (Dimension):



运行矩频特性 (Torque-frequency Characteristic):



注意：装配时，须保证电机轴和负载轴的同轴，严禁敲打，以免损坏电机。  
Note: When installing the motor, must ensure that the motor shaft and load shaft concentric, never hit it, so as not to damage the motor.