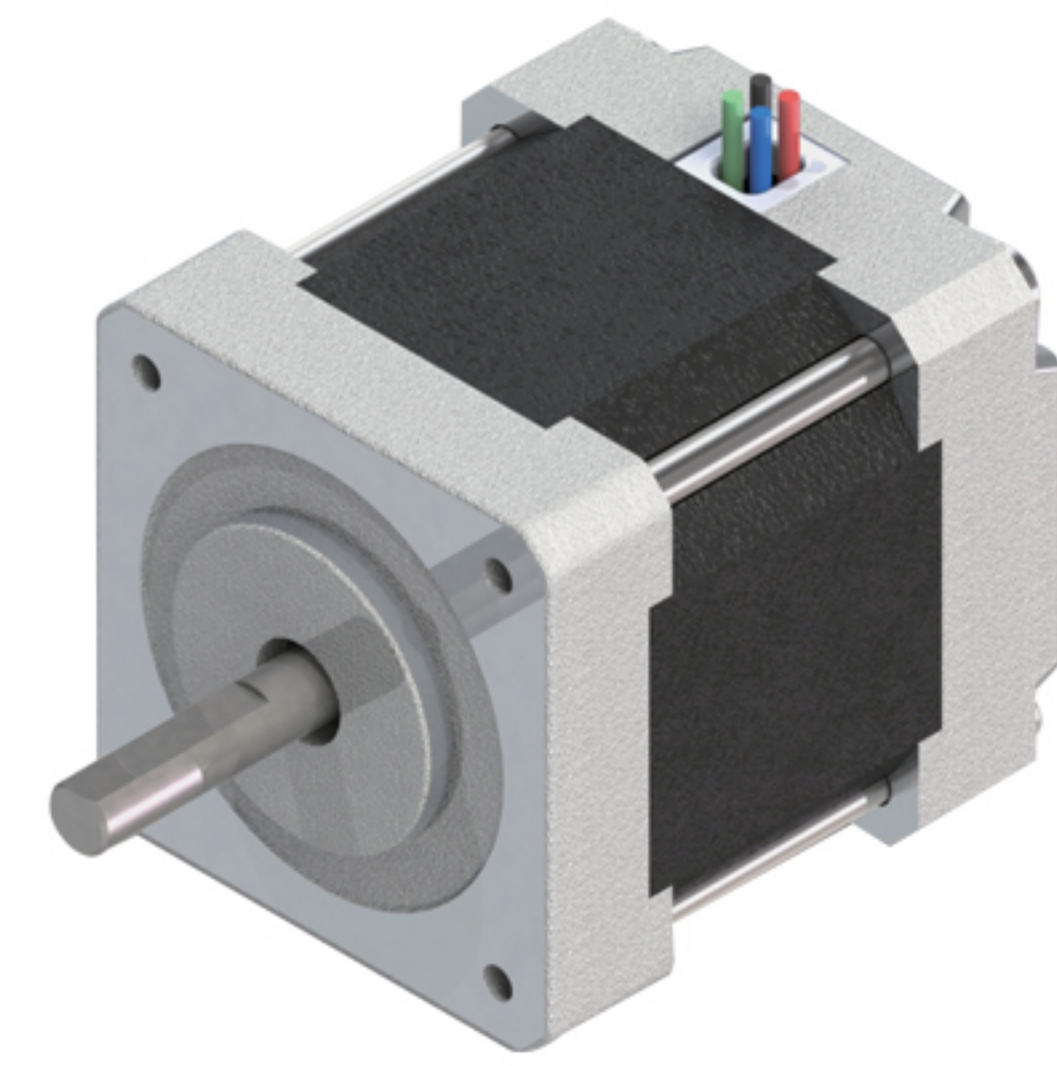


39H2F系列步进电机

39H2F Series stepping motor

步距角 Step Angle	1.8°
绝缘电阻 Insulation Resistance	500V DC 100MΩ Min
绝缘强度 Dielectric Strength	500V AC 50Hz 2mA 1Minute
环境温度 Ambient Temperature	-20~+40°C
温升 Temperature Rise	80K Max
绝缘等级 Insulation Class	B



产品性能参数(Electrical specification):

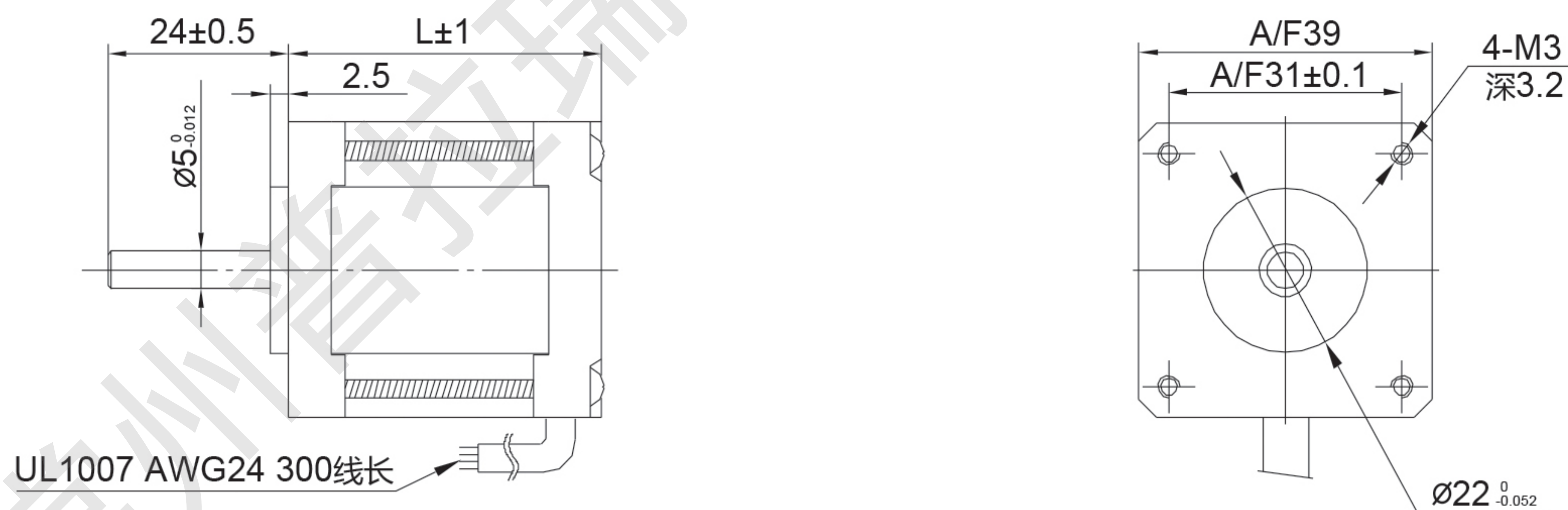
39H2F 双极性

型号	机身长度	额定电压 V	额定电流 Amps	绕组电参数 @20°C Typ.		静力矩		转子惯量		电机质量	
	mm			Ohms	mH	N.m	oz-in	g.cm ²	oz-in ²	Kg	Lbs
39H2F26-054	26	3.65	0.5	7.3	9.6	0.18	26	20	0.11	0.15	0.33
39H2F26-104		3.6	1.0	3.6	4.7	0.18	26	20	0.11	0.15	0.33
39H2F26-124		3.36	1.2	2.8	3.0	0.18	26	20	0.11	0.15	0.33
39H2F26-154		2.25	1.5	1.5	2.0	0.18	26	20	0.11	0.15	0.33
39H2F33-054	33	5.0	0.5	10	21	0.23	34	27	0.15	0.21	0.46
39H2F33-104		4.0	1.0	4.0	7.0	0.23	34	27	0.15	0.21	0.46
39H2F33-154		3.0	1.5	2.0	3.3	0.23	34	27	0.15	0.21	0.46
39H2F33-204		2.2	2.0	1.1	2.4	0.24	34	27	0.15	0.21	0.46

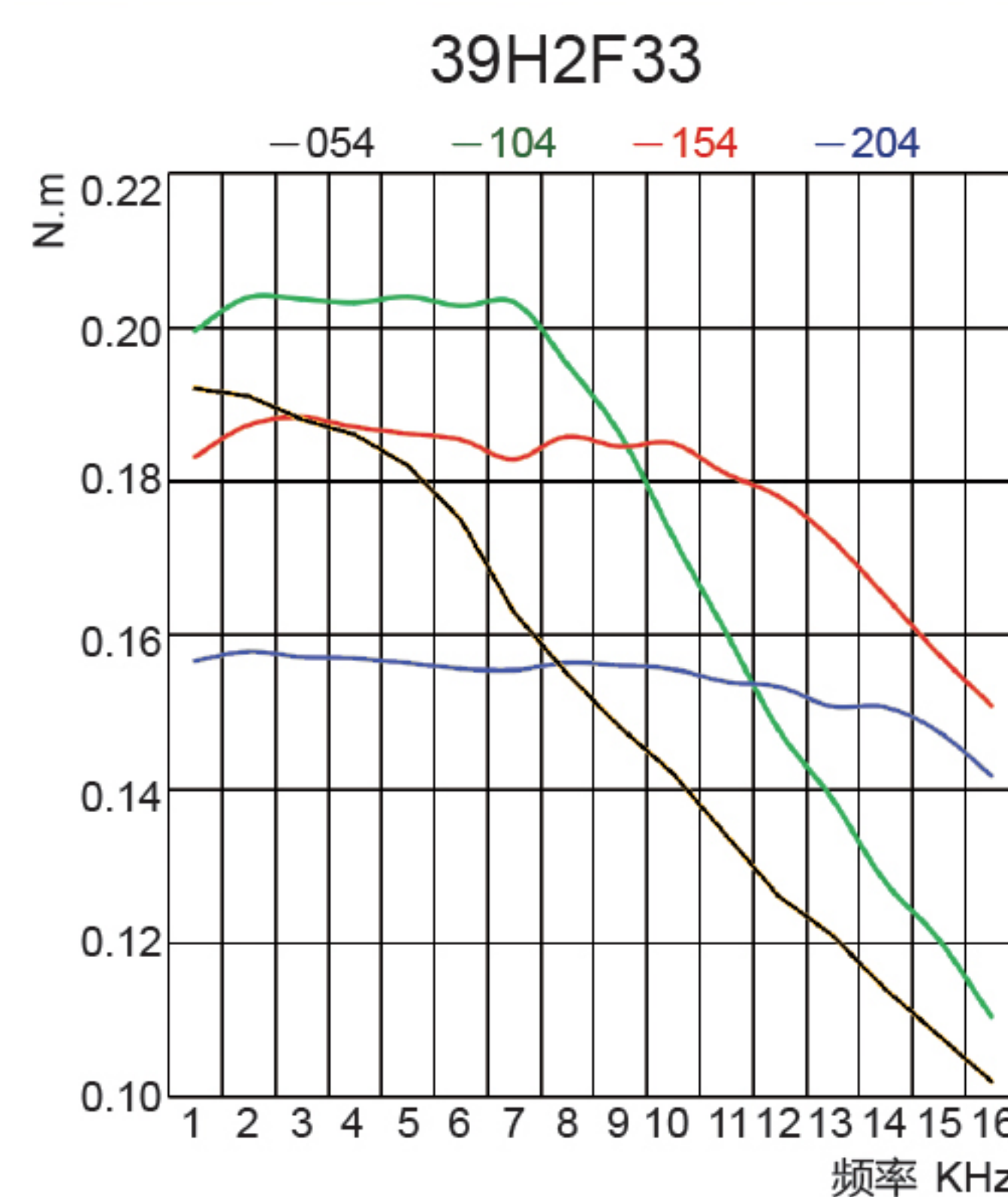
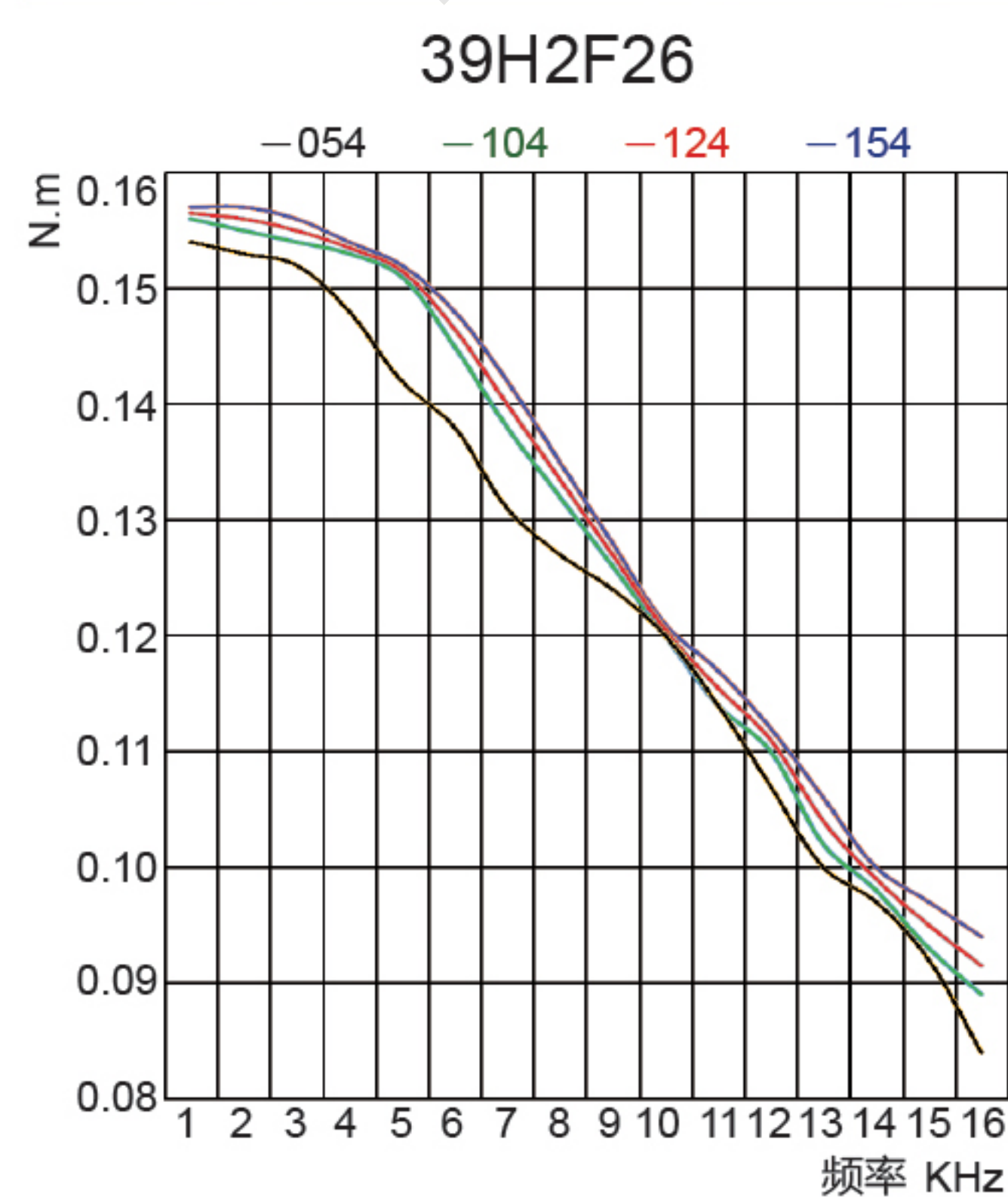
以上产品可根据客户要求定制。

Above Products can be customized according to customer requirement.

外形尺寸 (Dimension):



运行矩频特性 (Torque-frequency Characteristic):



注意：装配时，须保证电机轴和负载轴的同轴，严禁敲打，以免损坏电机。

Note: When installing the motor, must ensure that the motor shaft and load shaft concentric, never hit it, so as not to damage the motor.