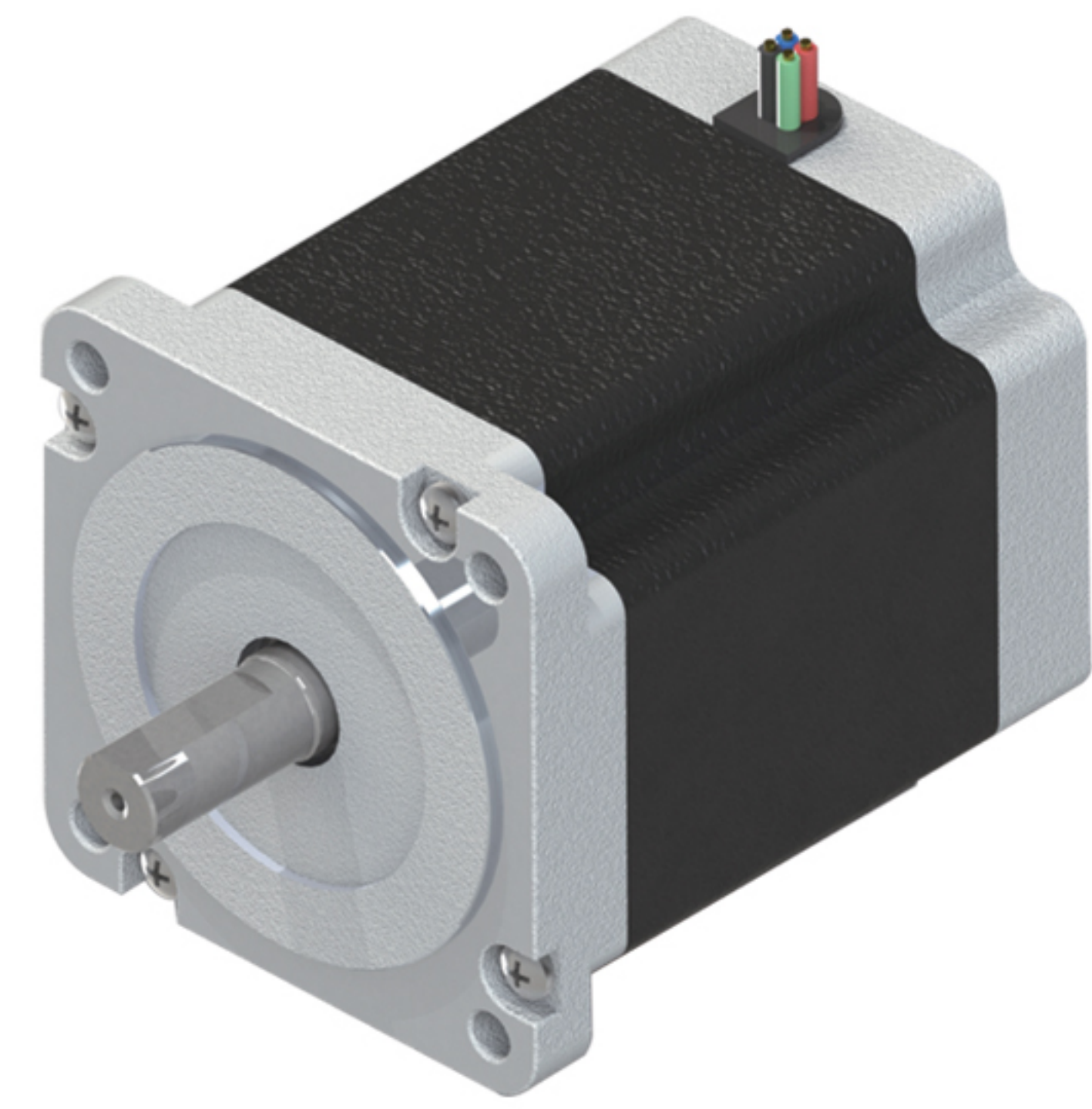


86H2F系列步进电机

86H2F Series stepping motor

| | |
|-------------------------------|---------------------------|
| 步距角 Step Angle | 1.8° |
| 绝缘电阻 Insulation Resistance | 500V DC 100MΩ Min |
| 绝缘强度 Dielectric Strength | 1000V AC 50Hz 2mA 1Minute |
| 环境温度 Ambient Temperature | -20~+40°C |
| 温升 Temperature Rise | 80K Max |
| 绝缘等级 Insulation Class | B |



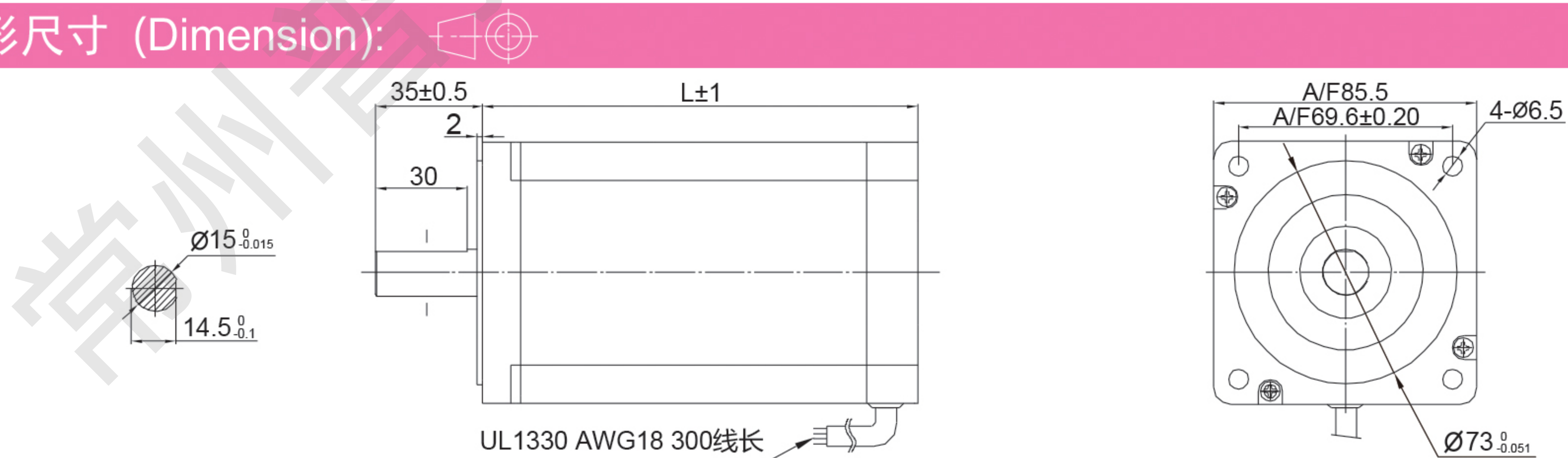
产品性能参数(Electrical specification):

86H2F 双极性

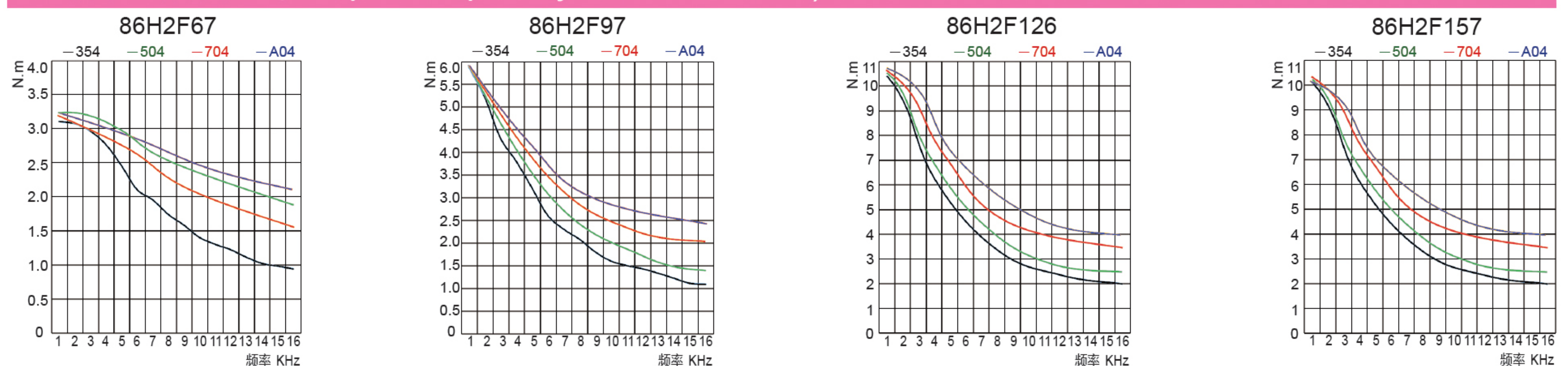
| 型号 | 机身长度 mm | 额定电压 V | 额定电流 Amps | 绕组电参数 @20°C Typ. | | 静力矩 | | 转子惯量 | | 电机质量 | |
|--------------|------------|-----------|--------------|---------------------|-----|------|-------|-------------------|--------------------|------|-----|
| | | | | Ohms | mH | N.m | oz-in | g.cm ² | oz-in ² | Kg | Lbs |
| 86H2F67-354 | 67 | 3.36 | 3.5 | 0.96 | 9.5 | 3.8 | 540 | 915 | 5.0 | 1.6 | 3.5 |
| 86H2F67-504 | | 2.4 | 5.0 | 0.48 | 4.5 | 3.8 | 540 | 915 | 5.0 | 1.6 | 3.5 |
| 86H2F67-704 | | 1.82 | 7.0 | 0.26 | 2.4 | 3.8 | 540 | 915 | 5.0 | 1.6 | 3.5 |
| 86H2F67-A04 | | 1.4 | 10 | 0.14 | 1.2 | 3.8 | 540 | 915 | 5.0 | 1.6 | 3.5 |
| 86H2F97-354 | 97 | 4.69 | 3.5 | 1.34 | 16 | 7.2 | 1000 | 1480 | 8.1 | 2.7 | 6.0 |
| 86H2F97-504 | | 3.05 | 5.0 | 0.61 | 8 | 7.2 | 1000 | 1480 | 8.1 | 2.7 | 6.0 |
| 86H2F97-704 | | 2.52 | 7.0 | 0.36 | 4 | 7.2 | 1000 | 1480 | 8.1 | 2.7 | 6.0 |
| 86H2F97-A04 | | 1.9 | 10 | 0.19 | 2 | 7.2 | 1000 | 1480 | 8.1 | 2.7 | 6.0 |
| 86H2F126-354 | 126 | 5.25 | 3.5 | 1.5 | 20 | 9.8 | 1400 | 2200 | 12 | 3.8 | 8.4 |
| 86H2F126-504 | | 3.6 | 5.0 | 0.72 | 9.5 | 9.8 | 1400 | 2200 | 12 | 3.8 | 8.4 |
| 86H2F126-704 | | 2.66 | 7.0 | 0.38 | 4.5 | 9.8 | 1400 | 2200 | 12 | 3.8 | 8.4 |
| 86H2F126-A04 | | 2.2 | 10 | 0.22 | 2.3 | 9.8 | 1400 | 2200 | 12 | 3.8 | 8.4 |
| 86H2F157-354 | 157 | 6.3 | 3.5 | 1.8 | 25 | 13.2 | 1869 | 3740 | 17 | 4.9 | 11 |
| 86H2F157-504 | | 4.5 | 5.0 | 0.9 | 12 | 13.2 | 1869 | 3740 | 17 | 4.9 | 11 |
| 86H2F157-704 | | 3.29 | 7.0 | 0.47 | 6.3 | 13.2 | 1869 | 3740 | 17 | 4.9 | 11 |
| 86H2F157-A04 | | 2.4 | 10 | 0.24 | 2.9 | 13.2 | 1869 | 3740 | 17 | 4.9 | 11 |

以上产品可根据客户要求定制。
Above Products can be customized according to customer requirement.

外形尺寸 (Dimension):



运行矩频特性 (Torque-frequency Characteristic):



注意：装配时，须保证电机轴和负载轴的同心，严禁敲打，以免损坏电机。
Note: When installing the motor, must ensure that the motor shaft and load shaft concentric, never hit it, so as not to damage the motor.