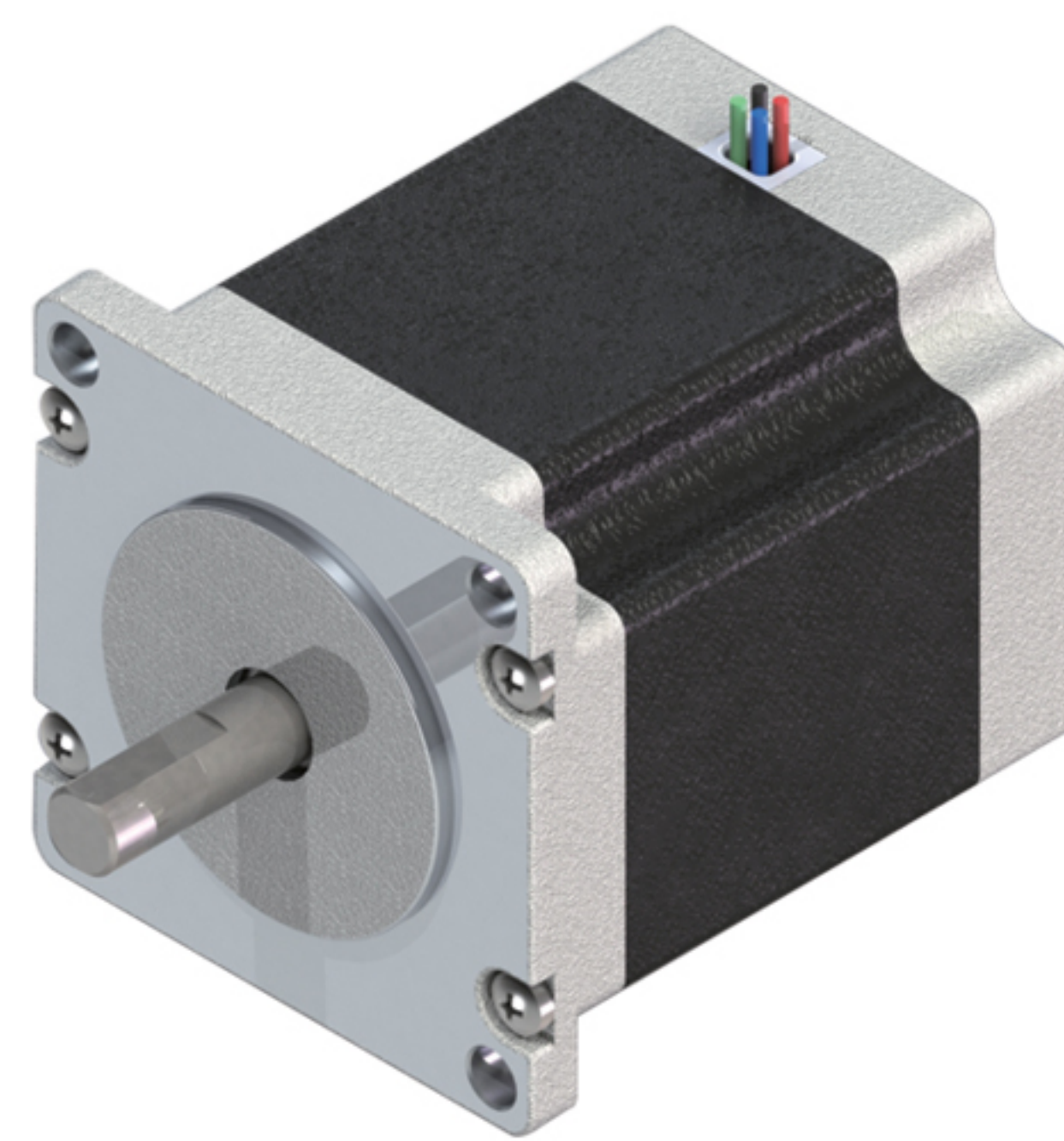


57H3F系列步进电机

57H3F Series stepping motor

步距角 Step Angle	1.2°
绝缘电阻 Insulation Resistance	500V DC 100MΩ Min
绝缘强度 Dielectric Strength	500V AC 50Hz 2mA 1Minute
环境温度 Ambient Temperature	-20~+40°C
温升 Temperature Rise	80K Max
绝缘等级 Insulation Class	B

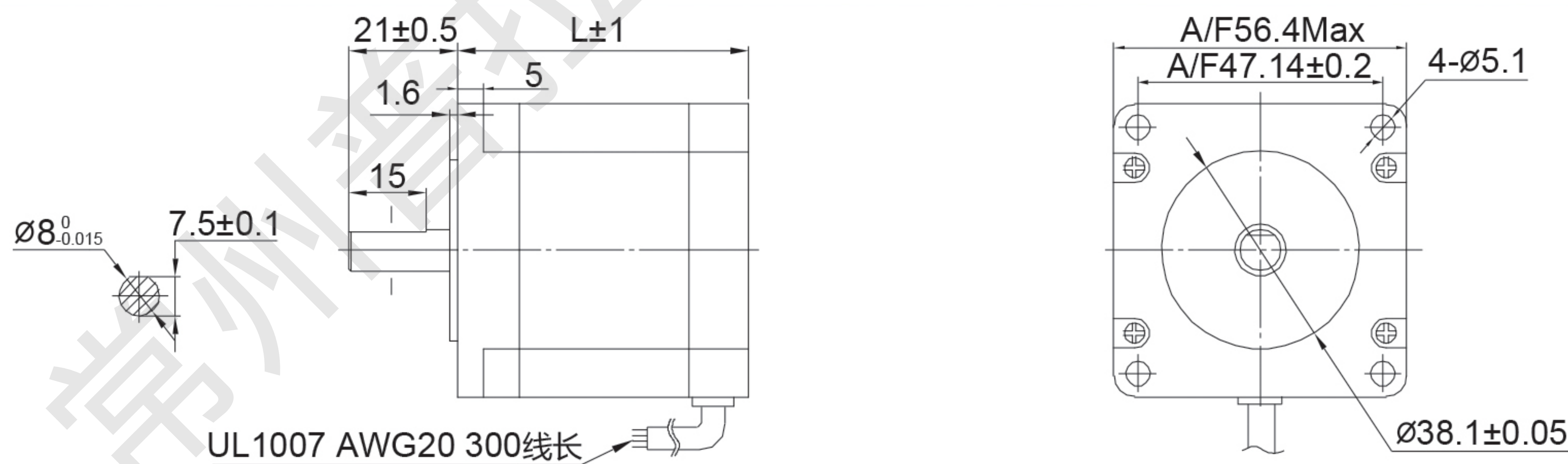


产品性能参数(Electrical specification):

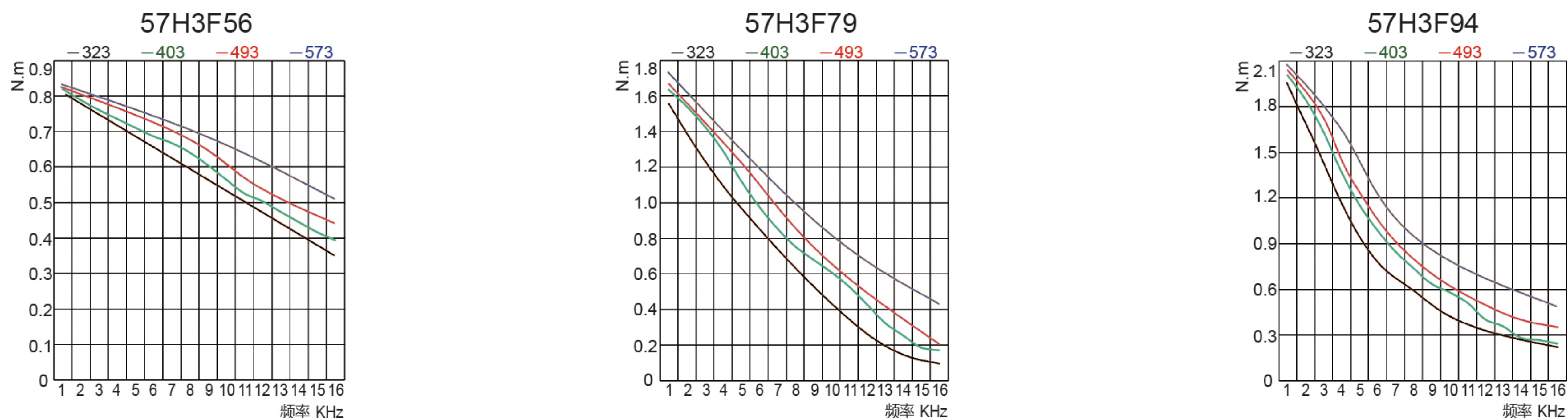
型号	机身长度	额定电压	额定电流	绕组电参数 @20°C Typ.		静力矩		转子惯量		电机质量	
	mm			V	Amps	Ohms	mH	N.m	oz-in	g.cm ²	oz-in ²
57H3F56-323	53	5.76	3.2	1.8	3.6	0.9	128	215	1.2	0.6	1.3
57H3F56-403		4.8	4.0	1.2	2.2	0.9	128	215	1.2	0.6	1.3
57H3F56-493		3.92	4.9	0.8	1.8	0.9	128	215	1.2	0.6	1.3
57H3F56-573		2.85	5.7	0.5	1.1	0.9	128	215	1.2	0.6	1.3
57H3F79-323	79	7.36	3.2	2.3	5.0	1.8	255	380	2.2	1.1	2.3
57H3F79-403		7.2	4.0	1.8	3.8	1.8	255	380	2.2	1.1	2.3
57H3F79-493		4.9	4.9	1.0	2.0	1.8	255	380	2.2	1.1	2.3
57H3F79-573		4.56	5.7	0.8	1.8	1.8	255	380	2.2	1.1	2.3
57H3F94-323	92	9.6	3.2	3.0	6.5	2.3	326	512	2.9	1.3	2.8
57H3F94-403		9.2	4.0	2.3	4.7	2.3	326	512	2.9	1.3	2.8
57H3F94-493		8.82	4.9	1.8	3.6	2.3	326	512	2.9	1.3	2.8
57H3F94-573		5.7	5.7	1.0	1.4	2.3	326	512	2.9	1.3	2.8

以上产品可根据客户要求定制。
Above Products can be customized according to customer requirement.

外形尺寸 (Dimension):



运行矩频特性 (Torque-frequency Characteristic):



注意：装配时，须保证电机轴和负载轴的同轴，严禁敲打，以免损坏电机。
Note: When installing the motor, must ensure that the motor shaft and load shaft concentric, never hit it, so as not to damage the motor.